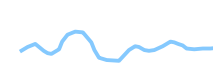





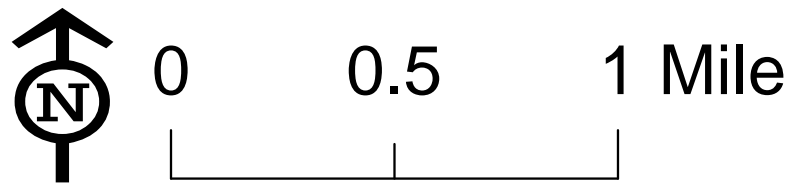
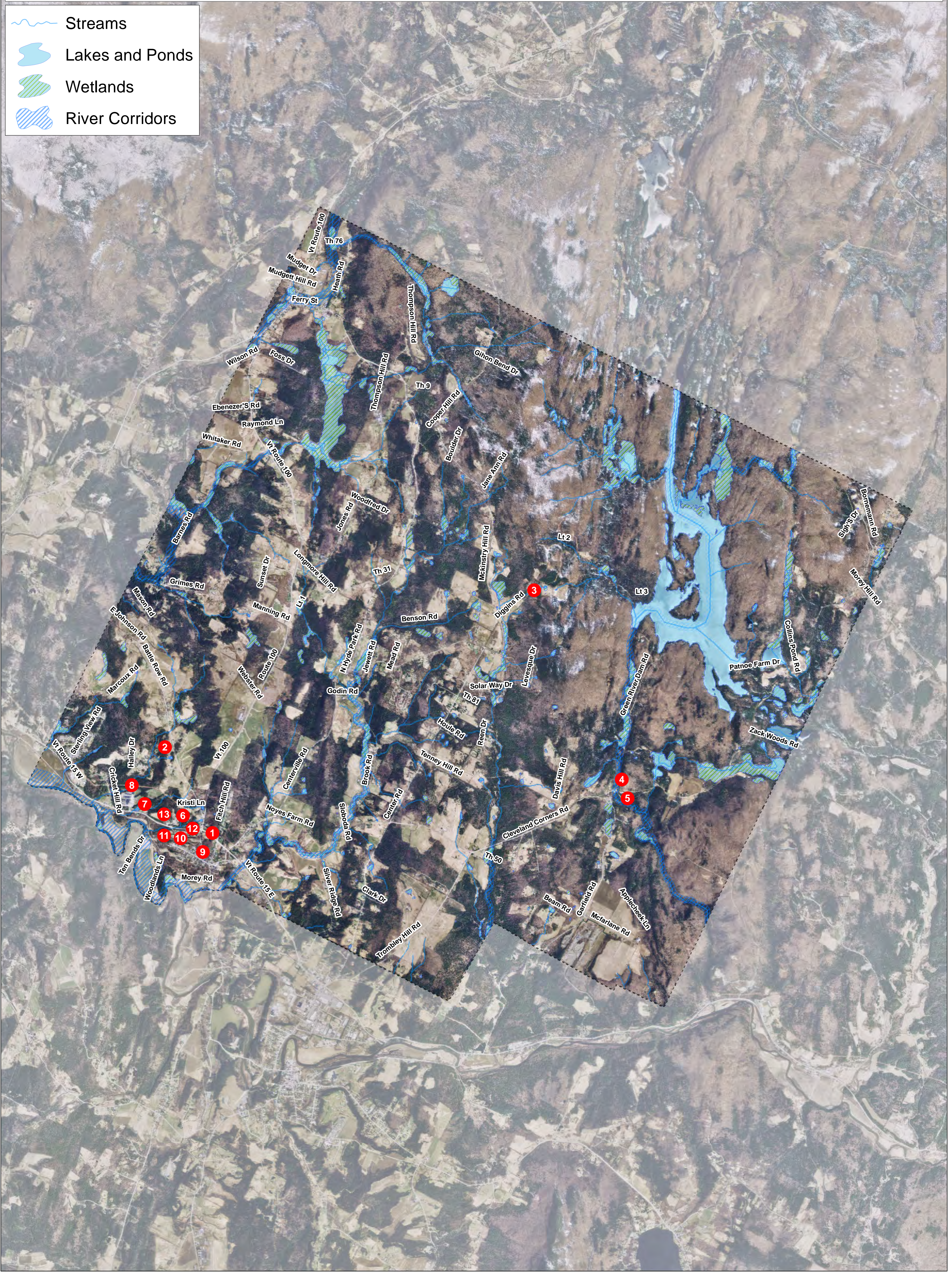
- |                             |   |  |
|-----------------------------|---|--|
| <b>1</b> Church St Retrofit | <b>6</b> Hyde Park Highway Department       | <b>11</b> Ten Bends Dr and Woodlands Ln Retrofit |
| <b>2</b> Cricket Hill Rd    | <b>7</b> Lamoille Union Schools - East      | <b>12</b> Tingle Rd                              |
| <b>3</b> Diggins Rd         | <b>8</b> Lamoille Union Schools - West      | <b>13</b> Town Office Building                   |
| <b>4</b> Garfield Rd        | <b>9</b> Main St GSI                        |  |
| <b>5</b> Green River Dam Rd | <b>10</b> Sylvan Hill Rd and Johnson St Ext |  |

 Streams

 Lakes and Ponds

 Wetlands

 River Corridors



Initial Sites Overview Map  
Hyde Park - Stormwater Master Plan  
Hyde Park, Vermont